

Courses and Distances
down the River beginning
at a White Oak on the
Bank are as followeth
N 64 1/2 E - 73 perches to a
White Thorn on the Bank thence

N 58° E - 32 Perches

N 32° E - 16.

N 11° E - 26

N 81° W - 28.7

N 5° E - 11.

N 48° E - 12.

N 35° E - 20.

N 58° E - 25.

S 69° E - 23

N 37° E - 28.

North - 14.

N 61° W - 23.

N 70° W - 10.

N 49° E - 30.

N 14° E - 49.

N 38° W - 30.6

to Plumb Bush thence

N 44° E - 19. Perches

N 72° E - 19.

S 79° E - 71.

S 51° E - 45.

S 46° E - 58.

S 70° E - 19.5

N 50° E - 12.

N 21° E - 16.

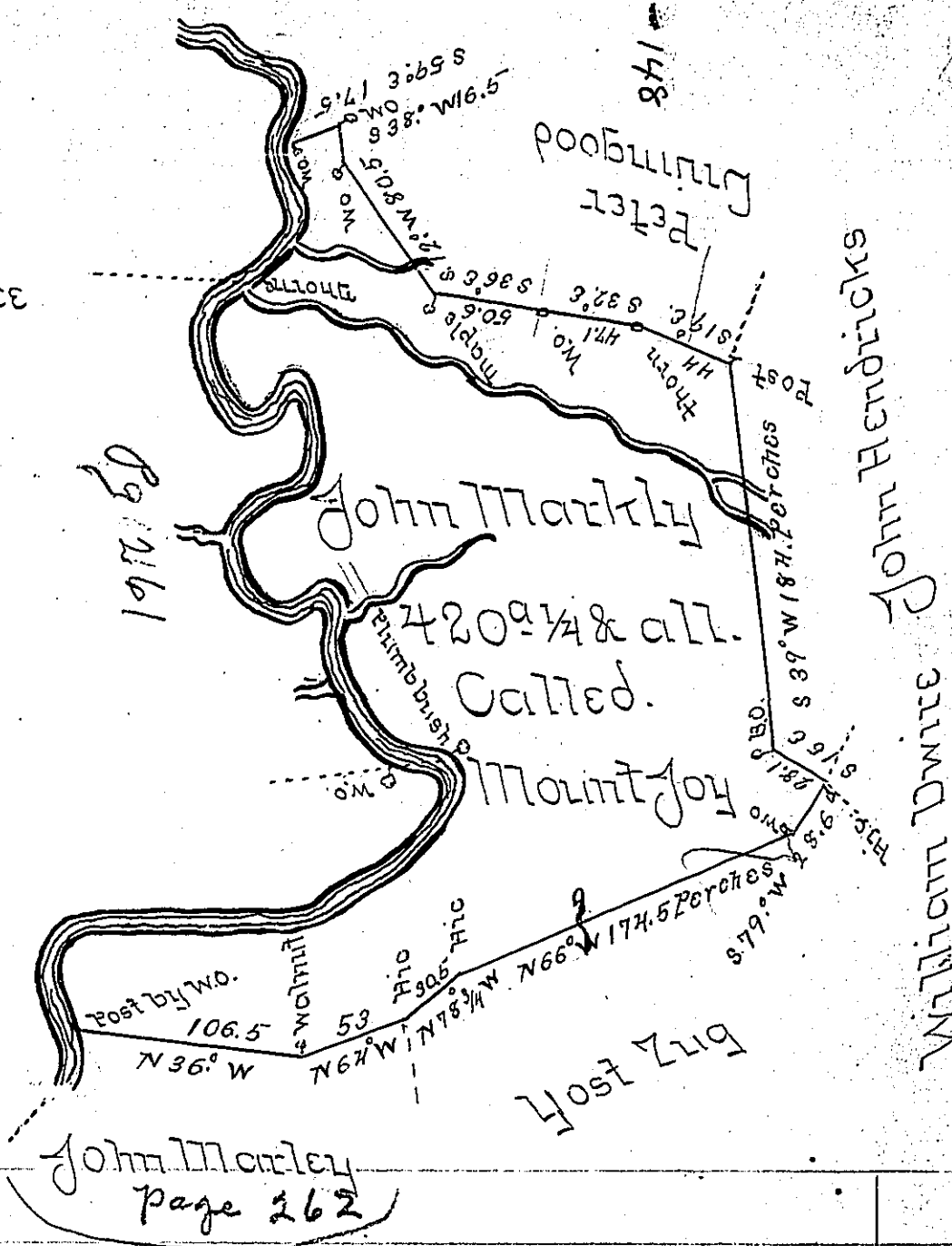
N 36 1/2 E - 8.

715:8

to a Post by a White
Oak on the Bank.

To John Lukens Esq[ue]
Surveyor General

718



John Markley
page 262

Situate on the West side of Little Lough
River including his improvement in
Brothers Valley Township Bedford County
and surveyed the 25th day of March 1785 -
in Pursuance of a Warrant dated the
fifth day of February 1785.

for Alexander McClean Esq[ue] U.S.
Thomas Vickroy

IN TESTIMONY that the above is a copy of the original remaining on file in
the Department of Internal Affairs of Pennsylvania, made
conformably to an Act of Assembly approved the 16th day of
February, 1833, I have hereunto set my Hand and caused
the Seal of said Department to be affixed at Harrisburg,
this twenty second day of December 1905.

George P. Brown
Secretary of Internal Affairs.